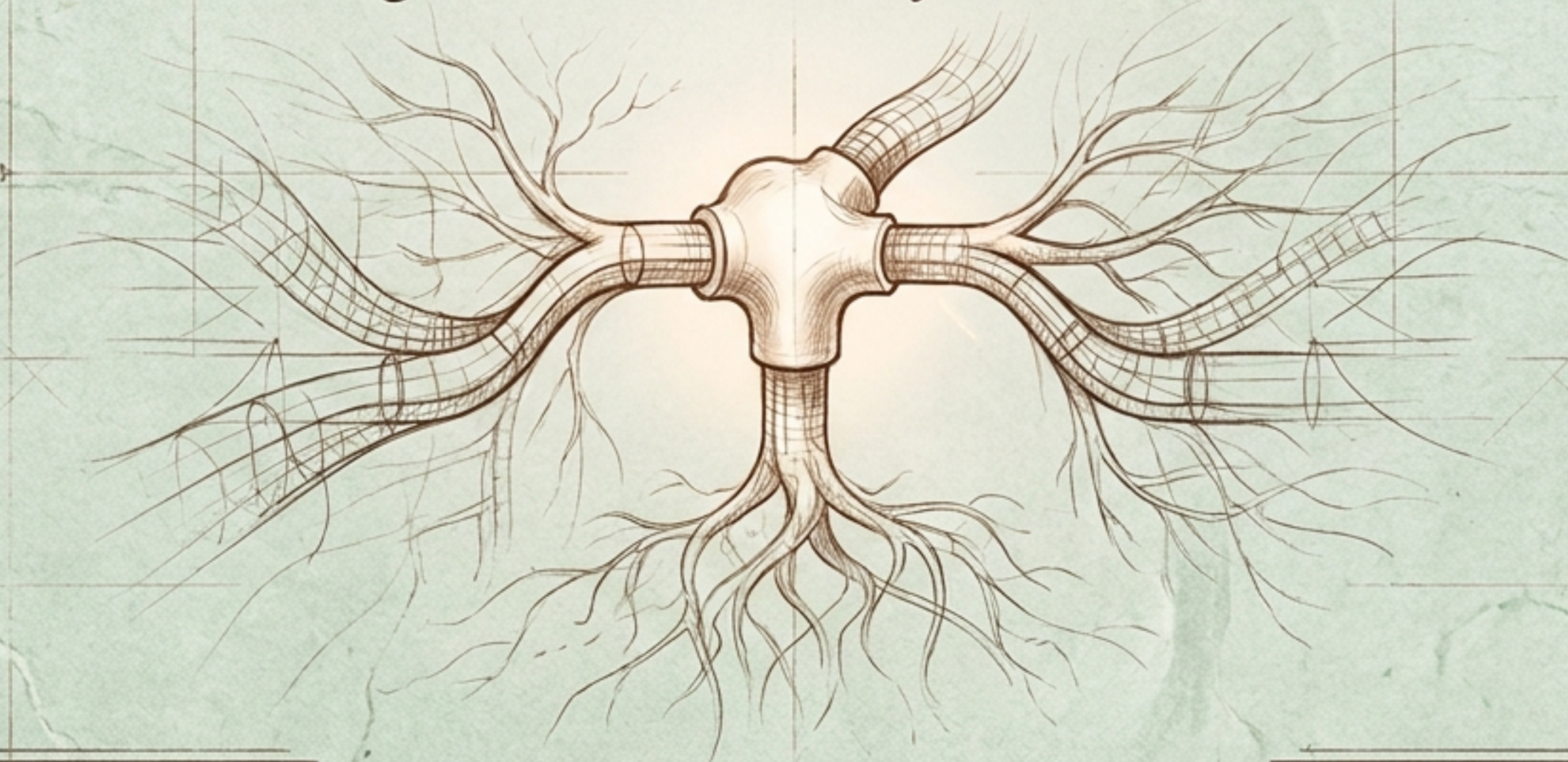


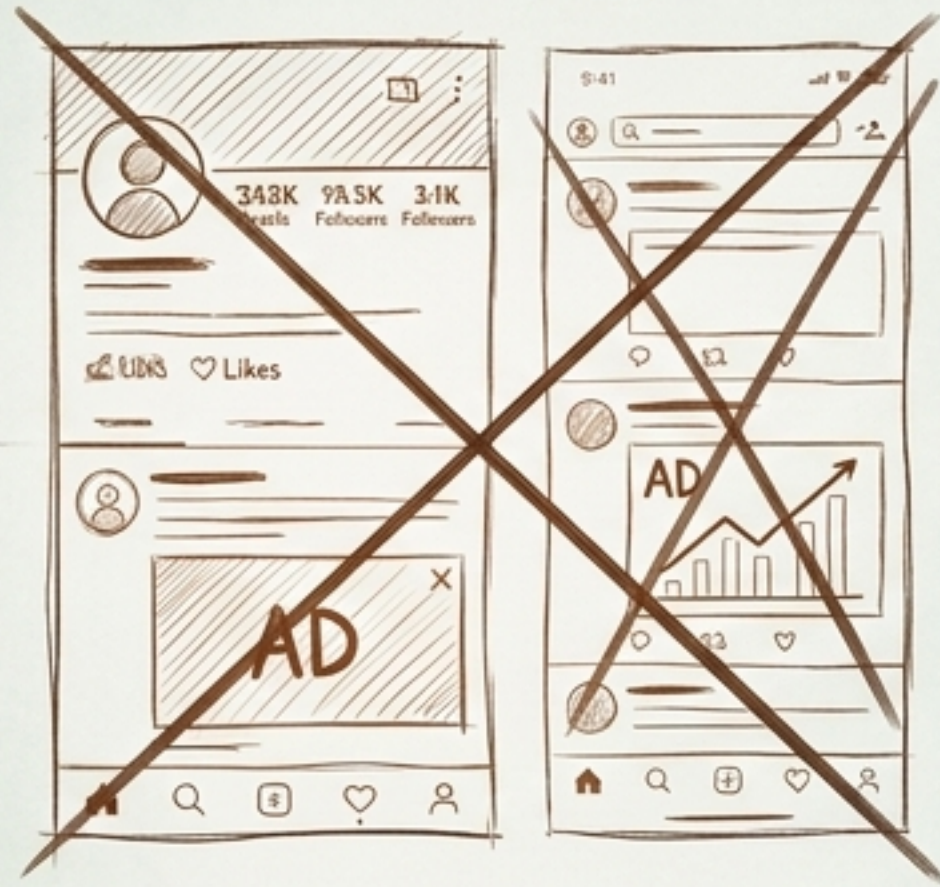
# *The Missing Category*

*Rethinking the architecture of human connection.*



# THE PHILOSOPHICAL GAP

## Performative Social Media



- Driven by public graphs and metric anxiety.
- Monetized via behavioral profiling.
- Passive consumption.

## The Philosophical Gap



## Isolated Journaling



- Writing into the void.
- Unstructured and unanchored.
- Safe, but entirely disconnected.

## Cryptographic Safety

- AES-256-GCM encryption
- Ephemeral AI
- Hard Deletion



## Relational Science

- Dunbar's Layers
- Plutchik Emotional Dial
- Pennebaker Paradigms

DunbarrioSolo is not a social network or a generic journal.  
It is a rigorously engineered relational skills practice tool.

## The Science

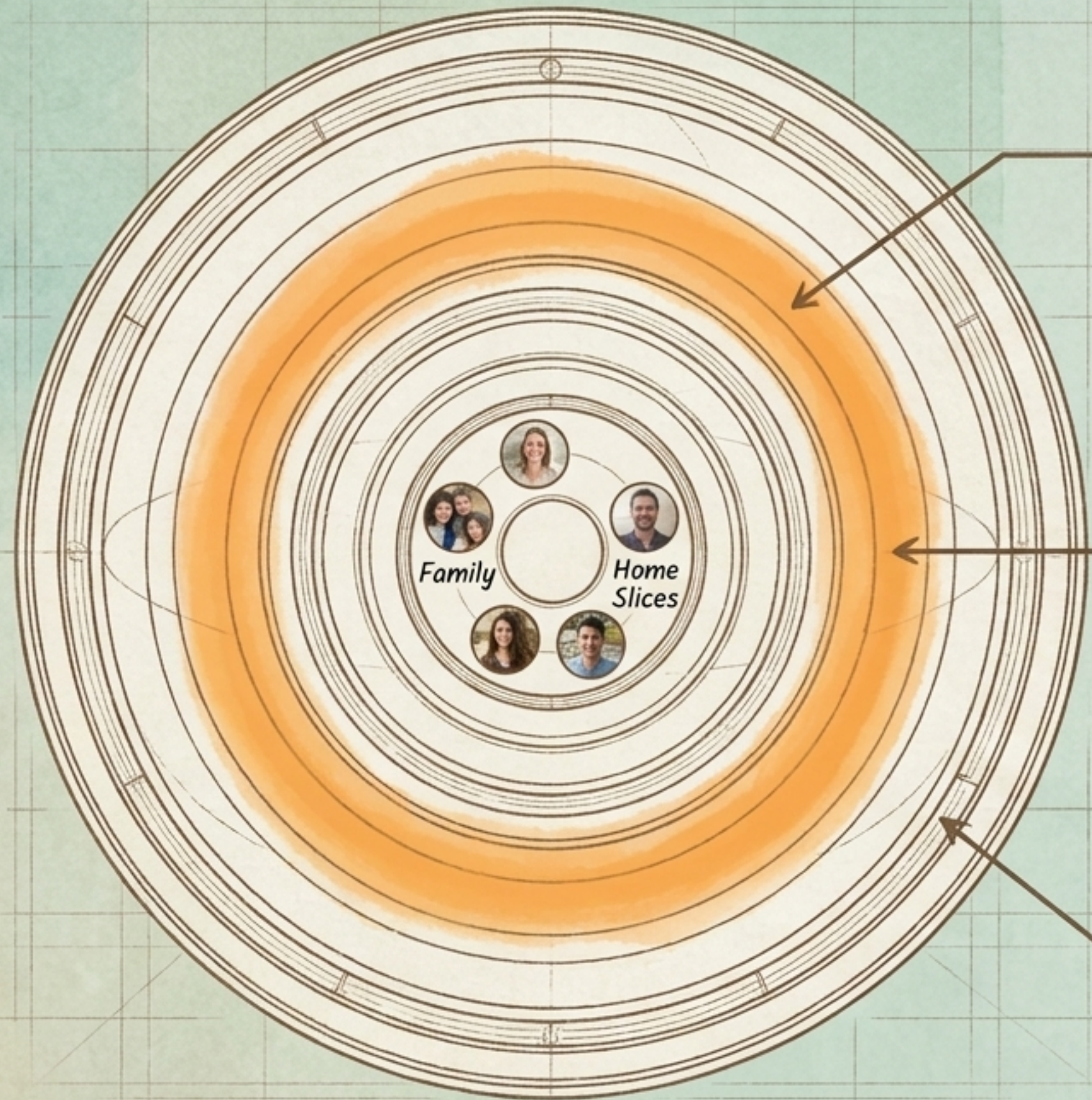
Human relationships scale in universal cognitive tiers (Dunbar's limit of ~150).

## The Finding

A 2025 PLOS ONE study (Li et al.) reveals individuals pour disproportionate relational energy into this middle zone, yet modern tools entirely ignore it.

## The Architecture

Users intuitively organize contacts into 3 to 16 tiered circles.



## *The Holding Environment* (Mascot - Solu the Capybara)



*Internal Reality*  
(The User)

- Carrying emotional weight.

*External Reality*  
(The Real Person)

### *Winnicottian Digital Transitional Objects (1951)*

*Operating as secure proxies, these characters provide a safe holding environment. They carry the emotional charge of specific real-world relationships without the risk of judgment.*

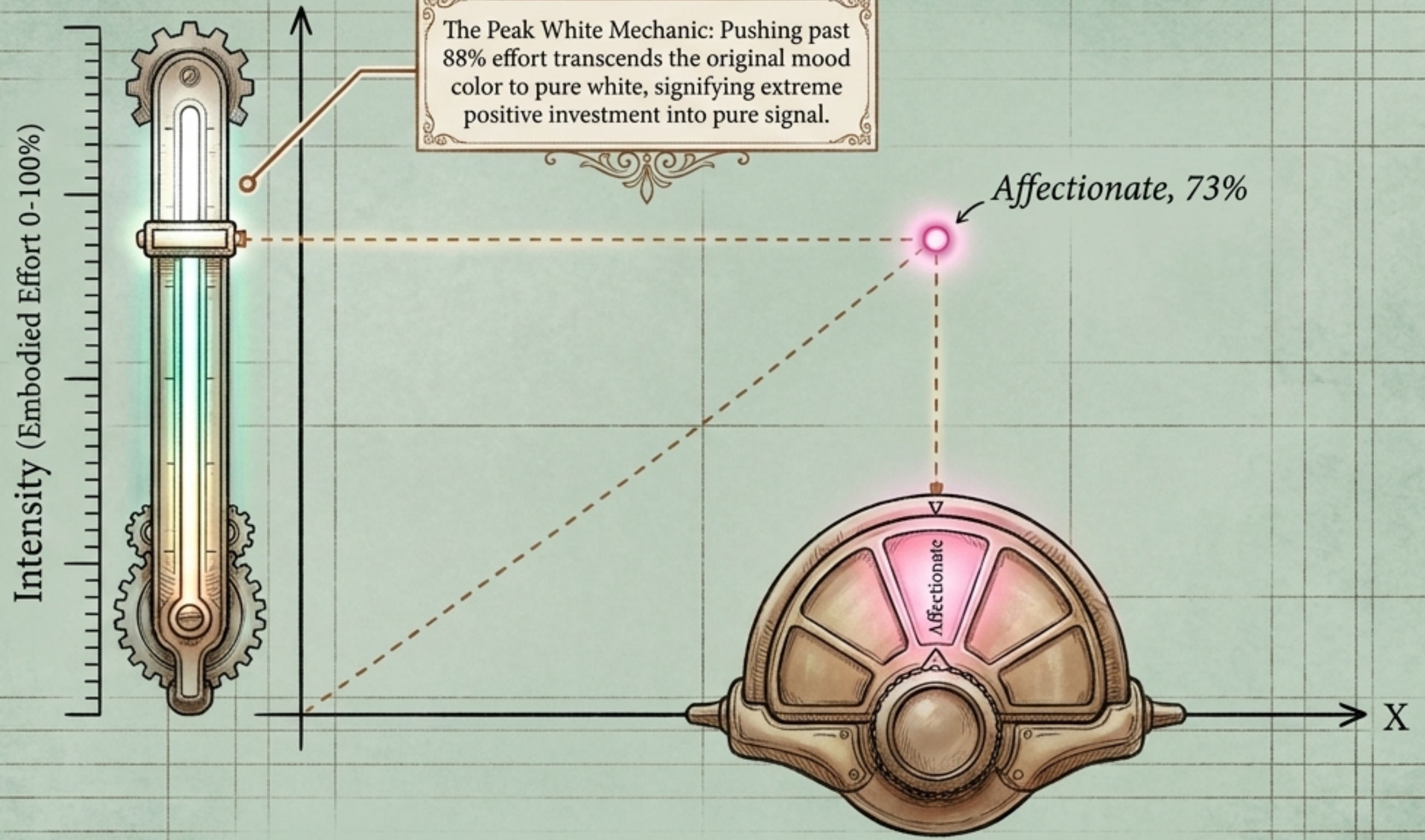
# The Core Intervention



*Built on Pennebaker's foundational paradigm (>300 clinical studies). The 'Embrace' is a directed journal entry meant for a specific person in your life—but sent to a secure proxy.*



*Utilizes acceptance-enhanced framing to structurally increase engagement depth without the short-term negative affect spikes of trauma-focused writing.*



Mood (Semantic Choice - Forces a conscious choice of precise emotional labels)

Moods

Energy

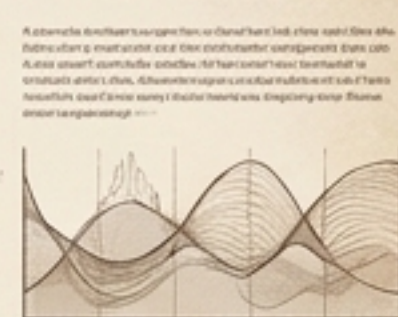
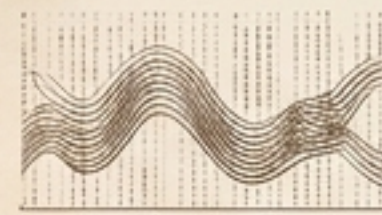
Embraces

Ledger Data



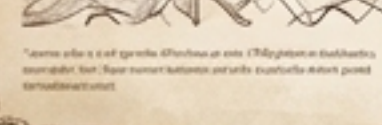
# AI Synthesis Engine

## Weekly Weave



There are three data series in this visualization. The first series represents the primary data stream, which shows a steady increase over time. The second series represents the secondary data stream, which shows a steady decrease over time. The third series represents the tertiary data stream, which shows a steady increase over time.

The data points for the first series are as follows: 10, 20, 30, 40, 50, 60, 70, 80, 90, 100. The data points for the second series are as follows: 100, 90, 80, 70, 60, 50, 40, 30, 20, 10. The data points for the third series are as follows: 10, 20, 30, 40, 50, 60, 70, 80, 90, 100.



### 1. Multimodal Ingestion

Queries 7 days of coordinates, text, and streak data.

### 2. Ephemeral Processing

Secure edge functions process the payload. API keys never touch local devices; memory is immediately wiped.

### 3. Pattern Recognition

Translates an invisible data stream into a coherent narrative.

# The Narrative Portrait

## Dominant Archetype

AI-identified emotional posture summarizing the relational shape of the week.

THIS WEEK'S SHAPE

## quietly holding everything

This is your first Weave, and the ecosystem is still forming – so what you see here is a beginning, not a verdict.

What this week shows, though, is someone carrying a remarkable amount at once: a marriage in an uncertain passage, a return to work that fills you with both dread and resolve, and somewhere in the middle of all that, a spontaneous overnight in Vancouver with your beys and a new car for Pete's rally dreams.

You tend to your people even when you yourself are unsteady – the embrace for Jenn knowing you might cry if she asks how you are, the calm gratulate towards your sister across an ocean, the joy you let yourself feel car-shopping with your son. Lena's birthday is in just a few days, on April 11th, and she hasn't appeared in your entries yet this week – that quiet absence might be worth sitting with.

*You express care through honest, full-sentence acknowledgment – you don't summarize people, you actually address them, which is a rarer gift than it sounds.*

FAMILY

FRIENDS

OVERZZZS

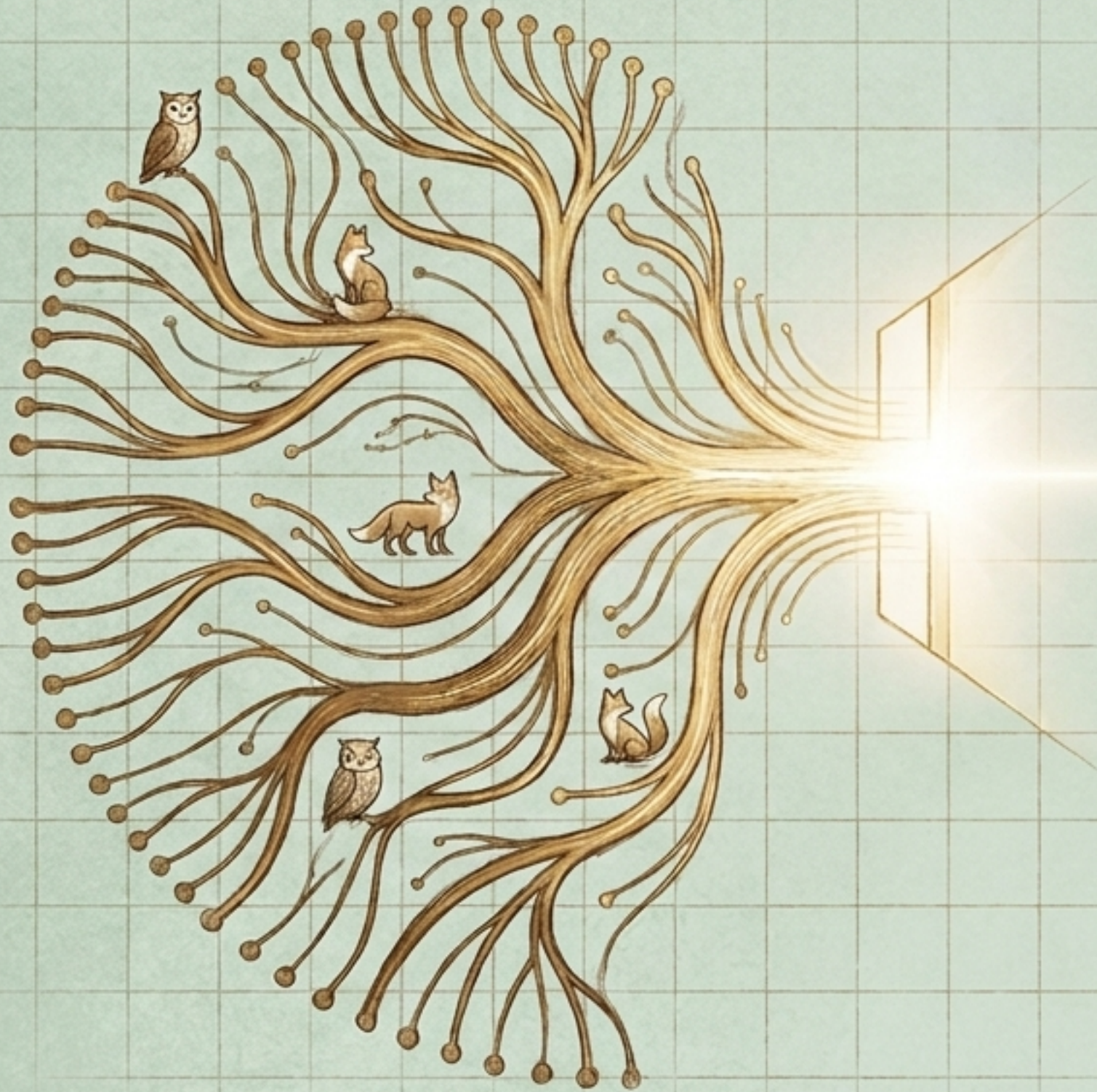
COLLEAGUES

## Connection Style

Visual tags showing energy distribution (Family, Friends, Overzzzs).

## The Growth Edge

Strictly anti-sycophantic observation. Hardened against generic AI flattery to provide honest, behaviorally specific reflections on social boundaries.



## Rites of Passage

Graduation is not a feature unlock; it is a collectively voted transition (Van Gennep, 1909) from private solo practice into shared communal governance.

## The Quiet Room

The deepest benefit of the architecture occurs when active journaling shifts into passive witnessing. The deeper you go, the more the community holds you, even when you are quiet.

*Welcome to your quiet room.*